



# Emily

Elizabeth Turner

**INTERNATIONAL MODEL & ACTRESS**

**AGE:** 11

**HEIGHT:** 164 CM / 5'4.5"

**BUST:** 76 CM / 30"

**WAIST:** 65 CM / 25.5"

**HIPS:** 84 CM / 33"

**SHOE:** EU 41 / US 9.5-10 / UK 7.5

**HAIR:** BROWN

**EYES:** BROWN

**LOCATION:** DENPASAR, BALI

(AVAILABLE INTERNATIONALLY)

## CONTACT EMILY



[www.emilyturnertalent.com](http://www.emilyturnertalent.com)



[contact@emilyturnertalent.com](mailto:contact@emilyturnertalent.com)



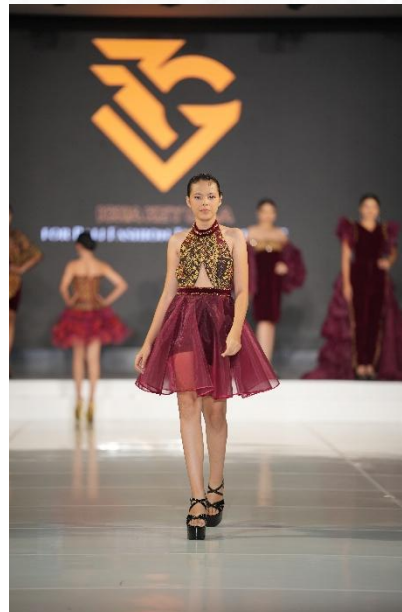
[@emily.turner17](https://www.instagram.com/emily.turner17)

# BRAND HIGHLIGHTS



**LAFW**  
LA FASHION WEEK™

THE **SAMAYA**  
BALI



# About Emily



## Emily Elizabeth Turner

Born in Bali, raised in Vegas, and trilingual in English, Indonesian, and Balinese—Emily is a polyglot designer bringing a 'Cosplay-to-Couture' edge to the global fashion stage.

## The Three Story Hooks (The Grid)

- **The Polyglot:** Bridging Western brands and SE Asian craft via 3 languages.
- **Cosplay to Couture:** How her design background informs her high-fashion movement.
- **Vegas to Bali:** A "third-culture" journey of reuniting with her Balinese heritage.

## Watch Emily's Reel



[Download Editorial-Ready High-Res Gallery](#)

*Young Model's*  
**Toolkit**

EXPLORE THE  
**MASTER BUNDLE**

[CLICK HERE](#)

[Order Now](#)